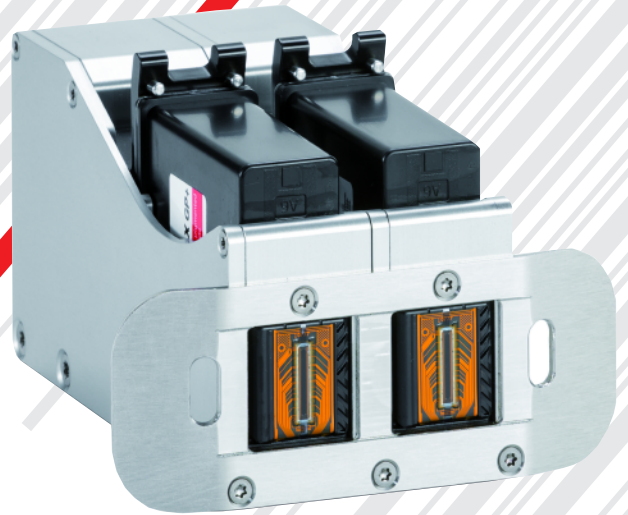


# NonStopPrinting



## Continuous printing with the NonStopPrinting function

- Intelligent printhead
- Continuous, uninterrupted printing in heavy-duty production environments
- Increased system availability due to reduced downtimes
- 2 print heads placed next to each other in one plane, which print alternately on the same spot
- Preventing a cartridge from drying out



Further information under:  
[www.markoprint.com/nonstop](http://www.markoprint.com/nonstop)

## Intelligent print heads make it possible

Conveyor stop because of a cartridge change? That's a thing of the past! The NonStopPrinting function enables continuous, uninterrupted printing of Markoprint inkjet printers in heavy-duty 24/7 industrial facilities.

An intelligent algorithm ensures that the cartridges are always ready for use. This increases plant availability and reduces downtimes.

Two print heads mounted side by side in one plane print alternately, at a ratio of 1:2, on the same position. The alternating printing prevents the ink from drying. Cartridge change or cleaning can be done without stopping production: If one cartridge is empty or needs cleaning, the second one continues printing until the missing cartridge has been replaced.

General information	
Print technology	Thermal Inkjet Technology
Supported printing technology	HP, LX
Max. number of print heads	2
Max. number of production lines	2
Length	193,5 mm
Width	94 mm (incl. deflector)
Height	99 mm

Performance data	
<b>Cable length in m:</b>	
Print head cable	3
Max. length print head cable HP	13
Max. length print head cable LX	50
<b>Print height in mm</b>	
	1 bis 12,5
<b>Max. print resolution in dpi:</b>	
Horizontal	900
Vertical	300 / 600
<b>Max. print speed in m/min</b>	
HP at 300 dpi	90
HP at 300 dpi HiSpeed	180
LX at 300 dpi	90
LX at 300 dpi HiSpeed	240
Recommended for barcodes	max. 60
Print direction	L/R or R/L, from top or side. Print from bottom is not possible

Technical changes reserved at any times

## Guaranteed print heights up to 25 mm

The NonStopPrinting function can be used for both HP and LX printheads.

In addition to a Parallel Single printhead with a print height of 12.5 mm, there is also a Parallel Twin printhead that guarantees a print height of 25 mm.

Two-color prints up to 25 mm are also possible with the NonStopPrinting printhead. With the water- and solvent-based inks of the HP and LX Class, company logos or warning symbols can be applied quickly and contact-free.

A signal exchange function is also available for greater security during printing. This checks the markings with the aid of a camera. In the event of printing errors, the cartridge responsible is stopped, while the second continues to print without errors.



Weber Marking Systems GmbH

Headquarter: Maarweg 33 • D-53619 Rheinbreitbach

Tel: +49 (0) 2224/7708-0 • Fax: +49 (0) 2224/7708-20

info@weber-marking.com • www.weber-marking.com